

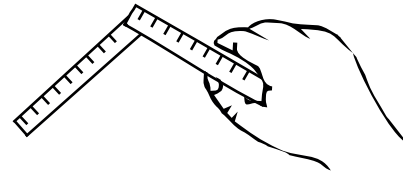
Mounting fluid RECIPE
 Water - 1/2 liter of water,
 Dishwashing liquid - 1/2 tsp.

For large pieces of film,
 it can be an advantage to be
 2 people for the mounting!

WHEN YOU INSTALL WET:

YOU WILL NEED:

- Film
- Tape
- Scraper (INCLUDED) - WRAP IT IN A CLOTH TO REDUCE SCRATCHES ON THE FOIL!
- Tape measure/ ruler to measure the location of the installation
- Hobby knife
- Atomizer bottle for mounting fluid

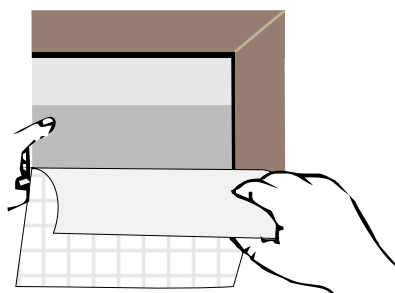


1. Measure where the film/sticker is to be mounted.

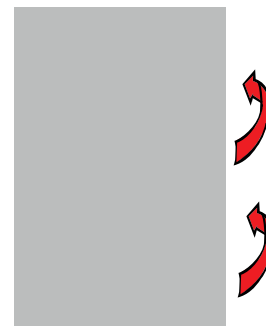


3. Atomize the mounting fluid in an even layer, on the cleaned surface where the vinyl will be mounted.

2. Then clean the surface THOROUGHLY before Mounting (the mounting fluid can be used to advantage) THIS IS VERY IMPORTANT AS DUST, DIRT OR GREASE RESIDUES CAN PREVENT THE VINYL FROM ADHERING PROPERLY



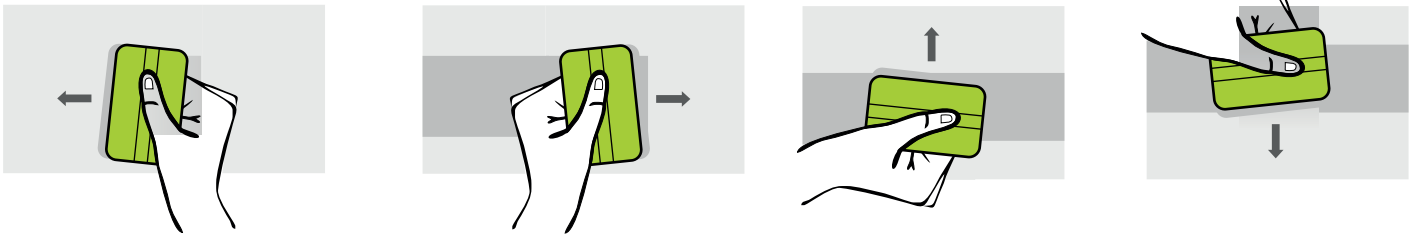
4. Then place the film face facing the wet mounting surface. THIS IS DONE IN ORDER FOR the film TO BECOME EASIER TO HANDLE IN FURTHER ASSEMBLY. Now remove the back paper and atomize the glue surface with the mounting fluid. NOTE. ON SOME FILM IS THE BACK PAPER TRANSPARENT AND THIN, SO IT CAN BE A LITTLE DIFFICULT TO SEPARATE FROM THE FILM THE BACK ITSELF.



5. The entire film is now turned with the glue side towards the surface, where it must be mounted according to your measurements.

NOTE!
 When to separate the film from the back paper!

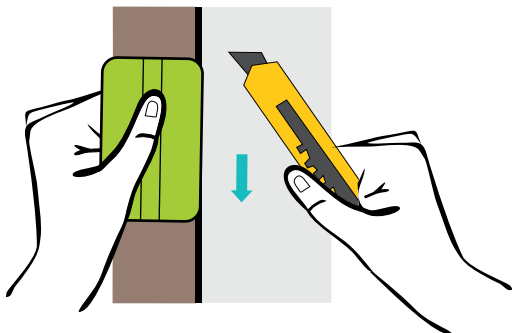
Take two pieces of tape, attach them to the corner on either side of the film. and pull apart gently to separate the back paper from the film.



6. Scrape in form of a cross; scrape from center to left, scrape from center to right, scrape from center up, scrape from center to bottom. **TAKE ONE SQUARE AT A TIME, REMEMBER TO START FROM THE CENTER OF THE CROSS AND PRESS ALL THE WATER OUT TOWARDS THE EDGE OF THE VINYL. SCRAPE WELL TO MAKE SURE THE WATER IS COMPLETELY OUT.**

If you are so unlucky that you have got a larger air bubble inside the foil that you cannot scrape out, you can puncture it with a round needle at the edge of the bubble and gently scrape from the opposite side of the bubble towards the hole..

WHEN MOUNTING ON WINDOWS - CONTINUE WITH THE NEXT POINT



7.

A. REMEMBER to have extra film in addition to the glass surface, as the film must only be cut after it is mounted on the window!

B. To cut the film, place the included mounting scraper against the rubber strip, then cut with the hobby knife after the mounting scraper, on the side AWAY from the rubber strip.

C. Then the film is mounted on your window.

NOTE: ALL AIR BUBBLES BELOW 4MM IN DIAMETER WILL DISAPPEAR AFTER SOME TIME WHEN ALL THE WATER HAS EVAPORATED.