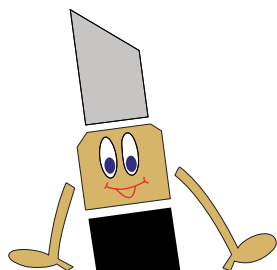




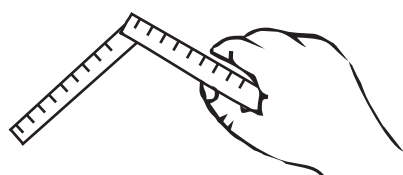
INSTALLATION

DRY OR WITH DUCTS



NOTE!
mounted
without water

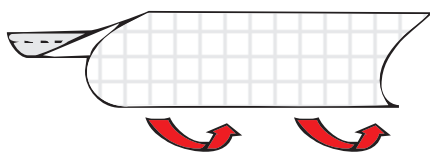
Please wrap the included scraper in a cloth to avoid scratching the foil.



1. Measure the place where the film/vinyl is to be mounted and then cut the vinyl/film into size. We recommend making the vinyl slightly oversized and only after assembly is the vinyl finally cut.



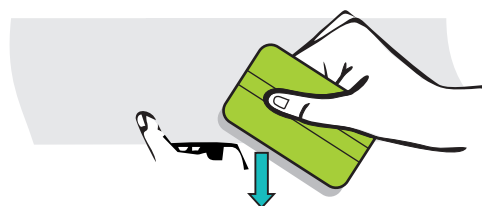
2. Clean the surface before mounting **IMPORTANT!** (It is very important to clean the surface before mounting, dust, dirt or any contamination. Grease residues can prevent the vinyl from adhering properly to the place, the surface can be cleaned with soap and water.)



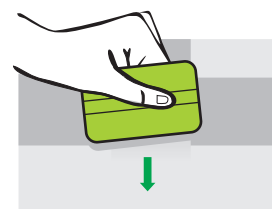
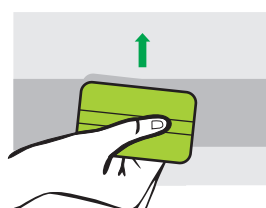
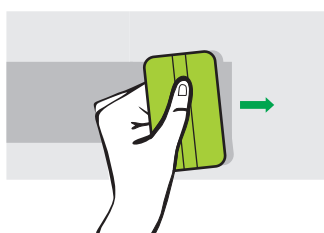
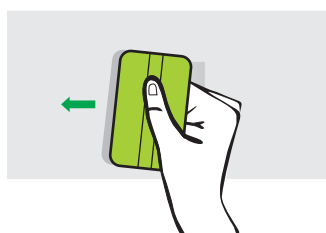
3. Now remove the back paper, Attention some vinyls /films have transparent back paper. You can use this trick to your advantage

NOTE!
When to separate the film from the back paper!

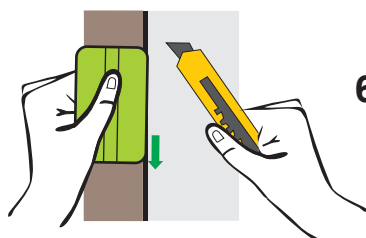
Take two pieces of tape, attach them to the corner on either side of the film, and pull apart gently to separate the back paper from the film.



4. Apply the vinyl/film to the surface according to your measurements.



5. Now scrape with the scraper in the middle from top to bottom, and from the center and out to the left, then from the center out to the right.



6. Now you can finally cut the vinyl/film to fit. Place the scraper up along the rubber strip and cut carefully with a hobby knife on the opposite side (away from the rubber strip)

Now you're finished